



Case Study: Operational & Control Centre. Location: Grangemouth.

Brief

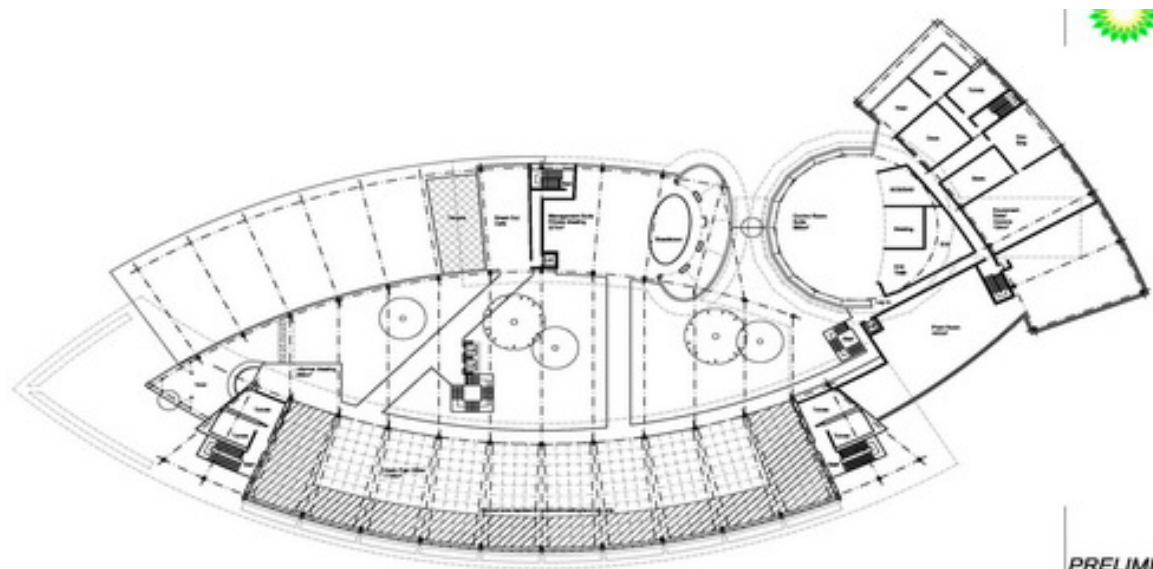
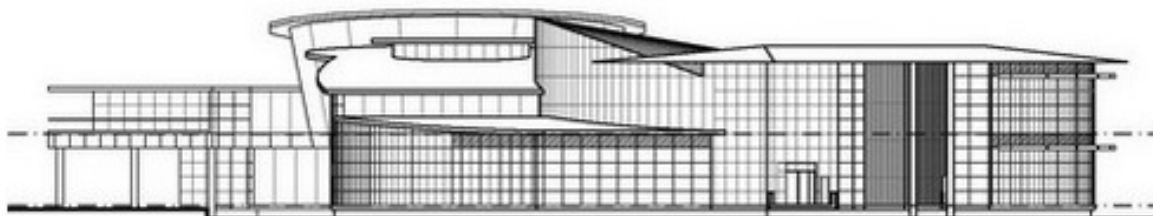
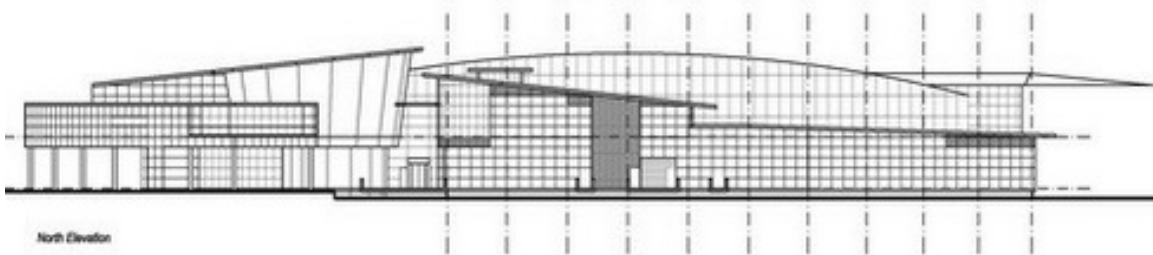
As a result of the Texas City Refinery disaster, all BP sites had to review their accommodation strategies within Process Plant areas. It was then identified that BP FPS in Grangemouth required to relocate personnel further away from the Site in a safer blast zone, however still within close enough proximity to respond efficiently in a Plant Emergency.

IKM were asked to assist with the development of the 'Client Brief', to assess and identify needs and requirements and to prepare a scheme building solution and site masterplan.

Solution

Through a series of end-user meetings and workshops, 'seek and learn' visits (RBS HQ in Gogarburn, Edinburgh Airport Control Tower, Scottish Gas HQ in Granton, Control Room in Houston, Texas), IKM developed the Client Brief. This reflected the Clients brand values, and the image of their ideal safe and productive contemporary workplace.

IKM also prepared many sketch images, 3D conceptual designs and animations and zoning diagrams, leading onto a scheme building design and site masterplan.



PRELIM

