



Case Study: Catering & Dining Facility.

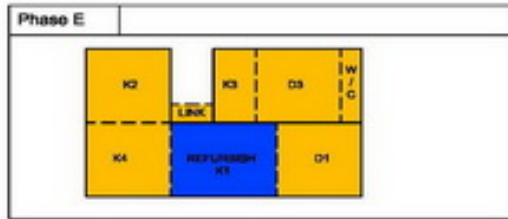
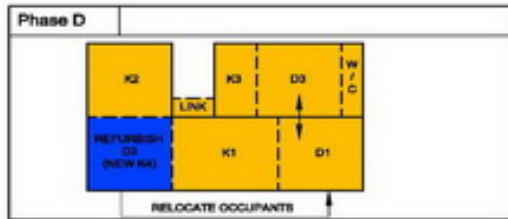
Location: Algeria.

Brief

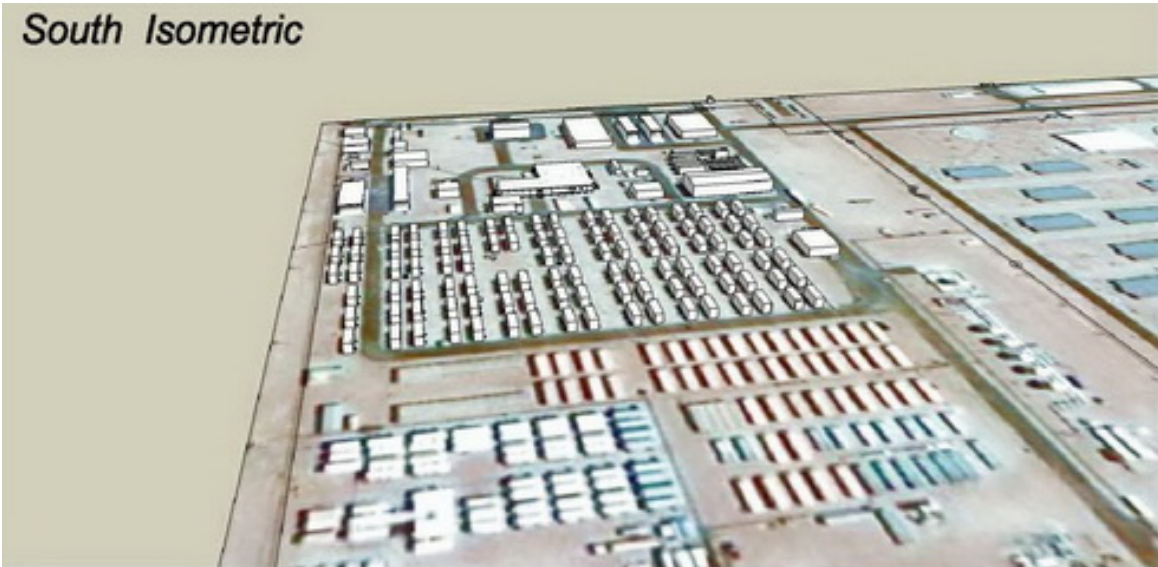
IKM were employed to undertake the scheme architectural design for catering and dining facilities within In Amenas Gas Plant, Algeria. The site, owned jointly by Oil companies Sonatrach, Statoil and BP were looking at upgrading their existing facilities or replacing them with new, fully equipped modular facilities for 220-400 personnel.

Solution

Our proposals included the complete refurbishment and fit out of the existing catering facilities to serve 220 people. We also prepared designs, specifications and sought costs for new facilities to serve 220 people and 400 people. Project logistics for maintaining continuous use were a priority, and were built into the designs. The project involved a site visit to In Amenas, to undertake a detailed survey and discuss the proposals with the Client and catering staff.



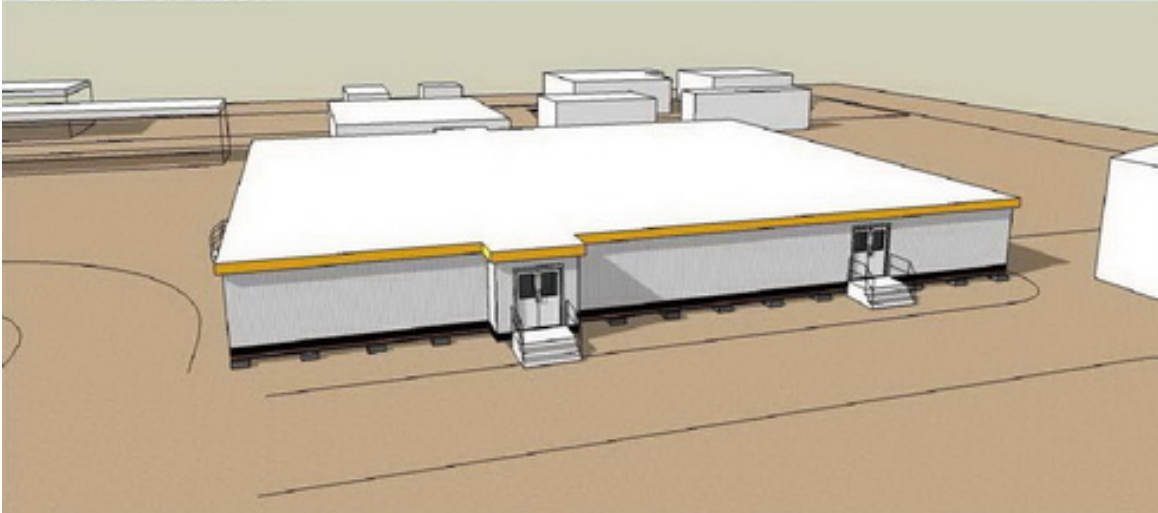
South Isometric



North Isometric



East Elevation



South Elevation

